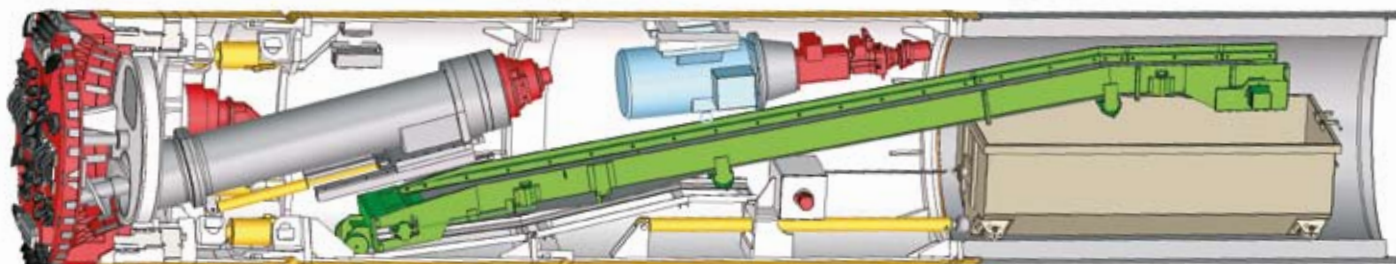


EPB1400TB – EPB2600TB PIPE JACKING – MUCK WAGGON



SPECIAL FEATURES

- Face support by earth pressure.
- Soil conditioning by foam injection in excavation chamber and screw conveyor possible.
- Maximum dimension of screw conveyor.
- Designed for soft and mixed ground conditions by use of different cutting wheels (full face excavation).
- Access to cutting wheel for tool replacement (backloading system).
- Highly reliable steering operation due to inductive measuring system.
- Equipped with heavy duty long-life main bearing and high torque peripheral drive.
- Hydraulic power pack in machine can.
- Remote-control possible.
- All machines compatible to U.N.S. Guidance System.
- Muck pump conveyance possible.

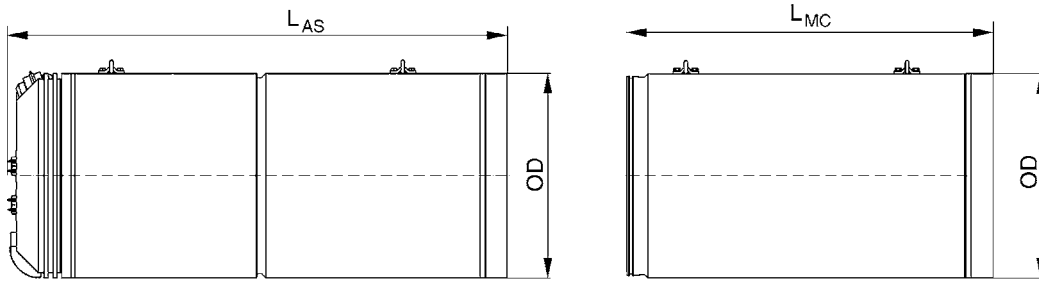
TECHNICAL DATA		EPB1400TB		EPB1500TB		EPB1600TB		EPB1800TB		EPB2000TB		EPB2200TB		EPB2400TB		EPB2600TB	
		Std*	Ext*	Std	Ext	Std	Ext	Std	Ext	Std	Ext	Std	Ext	Std	Ext	Std	Ext
1. Articulated Shield																	
Outer diameter	mm	1,740	1,810	1,810	1,970	1,970	2,150	2,150	2,425	2,425	2,725	2,725	3,025	3,025	3,325	3,125	3,625
Pipe OD	mm	1,720	1,780	1,780	1,940	1,940	2,120	2,120	2,400	2,400	2,700	2,700	3,000	3,000	3,300	3,100	3,600
Pipe ID	mm	1,400	1,500	1,500	1,600	1,600	1,800	1,800	2,000	2,000	2,200	2,200	2,400	2,400	2,800	2,600	3,000
Main drive																	
Max. torque	kNm	236		236		280		530		820		820		1,020		1,200	
Revolution	LH/RH rpm	0-6		0-6		0-5		0-5		0-5		0-5		0-6		0-5	
Rated Power	kW	110		110		132		160		250		250		315		315	
Roll correction		✓		✓		✓		✓		✓		✓		✓		✓	
Steering																	
Steering cylinders		4		4		4		4		4		8		8		8	
Force per cyl./oil pressure	kN/bar	752/500		752/500		1,005/500		1,272/500		1,272/500		770/500		770/500		1,005/500	
Stroke per cyl.	mm	60		60		60		100		100		150		150		150	
Control																	
Computer data logging system		✓		✓		✓		✓		✓		✓		✓		✓	
Fuzzy control (automatic steering)		opt.		opt.		opt.		opt.		opt.		opt.		opt.		opt.	
Fully visualized process control		✓		✓		✓		✓		✓		✓		✓		✓	
Active roll protection (el.-hydr.)		✓		✓		✓		✓		✓		✓		✓		✓	
Suitability U.N.S.:	ELS	✓		✓		✓		✓		✓		✓		✓		✓	
	ELS-HWL	✓		✓		✓		✓		✓		✓		✓		✓	
	GNS	✓		✓		✓		✓		✓		✓		✓		✓	
2. Machine Can																	
Lubrication System		✓		✓		✓		✓		✓		✓		✓		✓	
3. General Information																	
Pipe jacking		✓		✓		✓		✓		✓		✓		✓		✓	
Drive length (recommended)	m	400		500		700		900		1,100		1,100		1,100		1,100	
Access to cutting wheel		✓		✓		✓		✓		✓		✓		✓		✓	
Waterproofness	bar	3		3		3		3		3		3		3		3	
Telescopic and interjacking station		opt.		opt.		opt.		opt.		opt.		opt.		opt.		opt.	

All measures and data represent the main feasibility of the machines. Individual solutions are possible. Errors excepted.

*Std = standard; Ext = extension kit

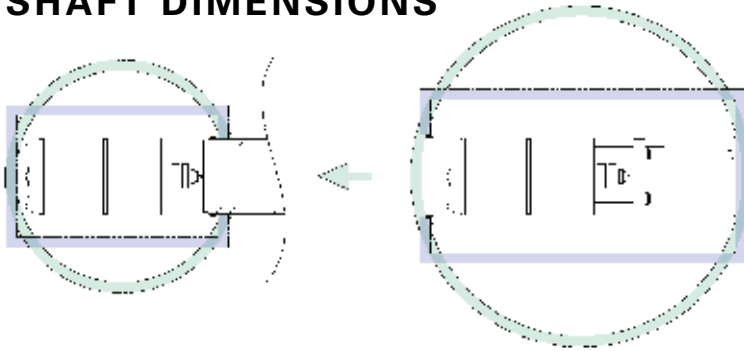


MACHINE DIMENSIONS



			EPB1400TB	EPB1500TB	EPB1600TB	EPB1800TB	EPB2000TB	EPB2200TB	EPB2400TB	EPB2600TB
Outer Diameter	OD	mm	1,740	1,810	1,970	2,150	2,425	2,725	3,025	3,125
Length artic. shield	L_{AS}	mm	3,800	3,800	3,800	4,200	5,700	6,000	6,000	6,000
Length machine can	L_{MC}	mm	3,200	3,200	3,200	3,600	3,600	3,600	3,600	3,600
Max. single weight	W	kg	19,000	20,000	24,000	30,000	45,000	50,000	55,000	60,000

SHAFT DIMENSIONS



		EPB1400TB	EPB1500TB	EPB1600TB	EPB1800TB	EPB2000TB	EPB2200TB	EPB2400TB	EPB2600TB
Launch Shaft	Pipe length	Shaft size	Shaft size	Shaft size	Shaft size	Shaft size	Shaft size	Shaft size	Shaft size
		$\varnothing = 8.0m$	$\varnothing = 8.0m$	-	-	-	-	-	-
		8.0m x 3.5m	8.0m x 3.5m	-	-	-	-	-	-
		3,000mm	$\varnothing = 8.5m$	$\varnothing = 8.5m$	$\varnothing = 8.5m$	$\varnothing = 9.0m$	$\varnothing = 11.0m$	$\varnothing = 11.0m$	$\varnothing = 11.5m$
		8.5m x 3.5m	8.5m x 3.5m	8.5m x 4.0m	9.0m x 4.0m	10.5m x 4.5m	11.0m x 5.0m	11.0m x 5.0m	11.0m x 5.0m
Reception Shaft	L_{AS}	3,800mm	3,800mm	3,800mm	4,200mm	5,700mm	6,000mm	6,000mm	6,000mm
	Circular	$\varnothing = 5.0m$	$\varnothing = 5.0m$	$\varnothing = 5.0m$	$\varnothing = 5.5m$	$\varnothing = 7.0m$	$\varnothing = 7.5m$	$\varnothing = 7.5m$	$\varnothing = 7.5m$
	Rectangular	4.5m x 2.5m	4.5m x 2.5m	4.5m x 3.0m	5.0m x 3.0m	6.5m x 3.5m	7.0m x 4.0m	7.0m x 4.0m	7.0m x 4.0m

All dimensions according to 15m shaft depth.

Machine type description e.g. AVN ¹⁾ 1800 ²⁾ T ³⁾ B ⁴⁾			
¹⁾ Machine type	²⁾ ID of jacking pipe	³⁾ Access to cutting wheel	⁴⁾ Type of container, power transfer from container to machine
		X = no access T = central door A = door above main drive or in top of pressure wall	B = electric cable to machine, power pack in machine C = hydraulic drive from container directly into machine E = electric cable from container directly into machine H = medium voltage supply to machine (> 1000V)

Herrenknecht AG
 D-77963 Schwanau
 Phone +49 (7824) 302 0
 Fax +49 (7824) 302 364
 utility@herrenknecht.com
 www.herrenknecht.com

Drilling for progress. Herrenknecht AG is a technology and market leader in mechanized tunnelling. Herrenknecht is the only company in the world to supply high-tech tunnelling machinery for all ground conditions and in all diameters.

