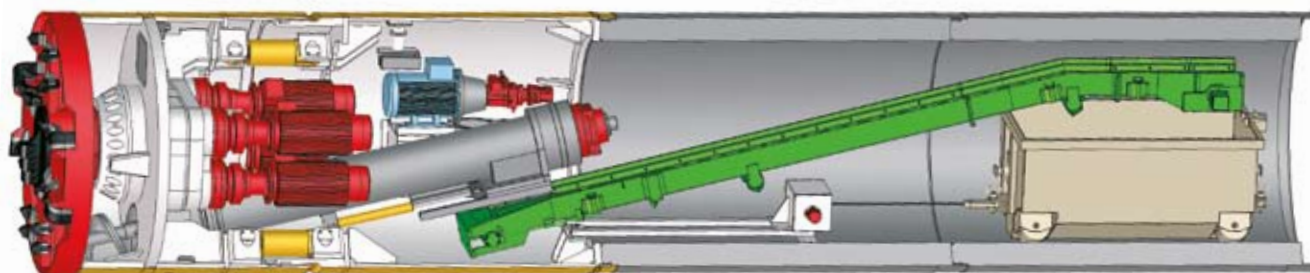


EPB1500AE – EPB2600AE PIPE JACKING – MUCK WAGGON



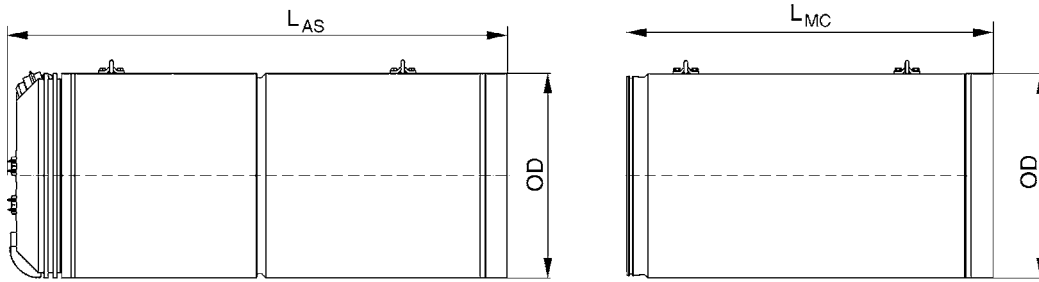
SPECIAL FEATURES

- Face support by earth pressure.
- Soil conditioning by foam injection in excavation chamber and screw conveyor possible.
- Maximum dimension of screw conveyor.
- Designed for soft and mixed ground conditions by use of different cutting wheels (full face excavation).
- Access to cutting wheel for tool replacement (backloading system).
- Highly reliable steering operation due to inductive measuring system.
- Equipped with heavy duty long-life main bearing and high torque electrical drive.
- Remote-control possible.
- All machines compatible to U.N.S. Guidance System.
- Muck pump conveyance possible.

TECHNICAL DATA		EPB1500AE	EPB1600AE	EPB1800AE	EPB2000AE	EPB2200AE	EPB2400AE	EPB2600AE
1. Articulated Shield								
Outer diameter	mm	1,810	1,970	2,150	2,425	2,725	3,025	3,125
Pipe OD	mm	1,780	1,940	2,120	2,400	2,700	3,000	3,100
Pipe ID	mm	1,500	1,600	1,800	2,000	2,200	2,400	3,000
Main drive								
Max. torque	kNm	175	175	350	350	500	560	560
Revolution	LH/RH rpm	0-3.5	0-3.5	0-3.5	0-3.5	0-3	0-3	0-3
Rated Power	kW	44	44	74	74	88	120	120
Roll correction		✓	✓	✓	✓	✓	✓	✓
Steering								
Steering cylinders		4	4	4	4	8	8	8
Force per cyl./oil pressure	kN/bar	752/500	1,005/500	1,272/500	1,272/500	770/500	770/500	1,005/500
Stroke per cyl.	mm	60	60	100	100	150	150	150
Control								
Computer data logging system		✓	✓	✓	✓	✓	✓	✓
Fuzzy control (automatic steering)		opt.	opt.	opt.	opt.	opt.	opt.	opt.
Fully visualized process control		✓	✓	✓	✓	✓	✓	✓
Active roll protection (el.-hydr.)		✓	✓	✓	✓	✓	✓	✓
Suitability U.N.S.:	ELS	✓	✓	✓	✓	✓	✓	✓
	ELS-HWL	✓	✓	✓	✓	✓	✓	✓
	GNS	✓	✓	✓	✓	✓	✓	✓
2. Machine Can								
Lubrication System		✓	✓	✓	✓	✓	✓	✓
3. General Information								
Pipe jacking		✓	✓	✓	✓	✓	✓	✓
Drive length (recommended)	m	500	700	900	1,100	1,100	1,100	1,100
Access to cutting wheel		✓	✓	✓	✓	✓	✓	✓
Waterproofness	bar	3	3	3	3	3	3	3
Telescopic and interjacking station		opt.	opt.	opt.	opt.	opt.	opt.	opt.

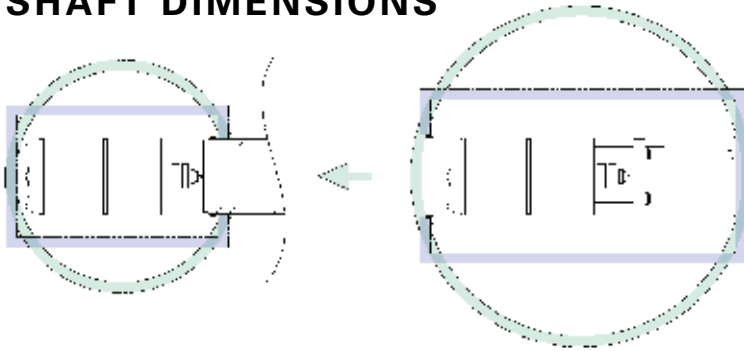
All measures and data represent the main feasibility of the machines. Individual solutions are possible. Errors excepted.

MACHINE DIMENSIONS



			EPB1500AE	EPB1600AE	EPB1800AE	EPB2000AE	EPB2200AE	EPB2400AE	EPB2600AE
Outer Diameter	OD	mm	1,810	1,970	2,150	2,425	2,725	3,025	3,125
Length artic. shield	L_{AS}	mm	4,800	4,800	5,100	5,100	5,250	6,000	6,000
Length machine can	L_{MC}	mm	-	-	-	-	-	-	-
Max. single weight	W	kg	17,000	19,000	30,000	32,000	35,000	48,000	50,000

SHAFT DIMENSIONS



		EPB1500AE	EPB1600AE	EPB1800AE	EPB2000AE	EPB2200AE	EPB2400AE	EPB2600AE
Launch Shaft	Pipe length	Shaft size	Shaft size	Shaft size	Shaft size	Shaft size	Shaft size	Shaft size
	Main jacking station	2,500mm	$\varnothing = 9.0m$	$\varnothing = 9.0m$	-	-	-	-
			3.5m x 9.0m	3.5m x 9.0m	-	-	-	-
		3,000mm	$\varnothing = 9.5m$	$\varnothing = 9.5m$	$\varnothing = 10.0m$	$\varnothing = 10.0m$	$\varnothing = 10.5m$	$\varnothing = 11.5m$
		3.5m x 9.5m	3.5m x 9.5m	4.0m x 9.5m	4.5m x 9.5m	5.0m x 10.5m	5.0m x 11.0m	5.0m x 11.0m
Reception Shaft	L_{AS}	4,800mm	4,800mm	5,100mm	5,100mm	5,250mm	6,000mm	6,000mm
	Circular	$\varnothing = 6.0m$	$\varnothing = 6.0m$	$\varnothing = 6.5m$	$\varnothing = 6.5m$	$\varnothing = 7.0m$	$\varnothing = 7.5m$	$\varnothing = 7.5m$
		Rectangular	2.5m x 5.5m	3.0m x 5.5m	3.0m x 6.0m	3.5m x 6.0m	4.0m x 6.0m	4.0m x 7.0m

All dimensions according to 15m shaft depth.

Machine type description e.g. AVN ¹⁾ 1800 ²⁾ T ³⁾ B ⁴⁾			
¹⁾ Machine type	²⁾ ID of jacking pipe	³⁾ Access to cutting wheel	⁴⁾ Type of container, power transfer from container to machine
		X = no access T = central door A = door above main drive or in top of pressure wall	B = electric cable to machine, power pack in machine C = hydraulic drive from container directly into machine E = electric cable from container directly into machine H = medium voltage supply to machine (> 1000V)

Herrenknecht AG
 D-77963 Schwanau
 Phone +49 (7824) 302 0
 Fax +49 (7824) 302 364
 utility@herrenknecht.com
 www.herrenknecht.com

Drilling for progress. Herrenknecht AG is a technology and market leader in mechanized tunnelling. Herrenknecht is the only company in the world to supply high-tech tunnelling machinery for all ground conditions and in all diameters.

